



"MARMOLADA" TWIN SET

AVANTGARDE yarn

YARN
ADRIAFIL YARNS

MATERIALS

- 550 g. **Avantgarde** yarn in rust brown no. 98
- knitting needles nos. 2, 21/2 and 3
- double tip cable needle
- tapestry needle

SIZE: 46 (42-44)

PATTERN STITCHES

Elastic rib (beg. and end)

K1/p1 rib stitch

Knitted stitch

Purled stitch

Cable stitch (work over 5 sts.):

Rows 1 and 3: knitted stitch.

Row 2 and next even rows: purl.

Row 5: 5 sts, crossed rightwise (= stand off 2 sts. on cable needle at back of work, k3, knit up the standing stitches).

Row 7: rep. from row 1.

Diamond stitch (work over 36 sts.): follow chart taking into account the following:

- 3 sts, crossed rightwise A: stand off 1 st. on cable needle at back of work, k2, knit up the standing sts.
 - 3 sts. incr. leftwise A: stand off 2 sts. on cable needle in front of work, k1, knit up the standing stitches
 - 3 sts, crossed rightwise B: stand off 1 st. on cable needle at back of work, k2, purl the standing sts.
 - 3 sts. incr. leftwise B: stand off 2 sts. on cable needle in front of work, p1, knit up the standing stitches
 - 4 sts, crossed rightwise: stand off 2 sts. on cable needle at back of work, k2, knit up the standing stitches
- Knit st. to trim the elastic ribbing

GAUGE

10x10 cm. using knitting needles no. 3 work in knit stitch. = 29 sts. and 41 rows.

WORKING INSTRUCTIONS DRESS

Back: with knitting needles no. 21/2 cast on 177 (153-165) sts. and for the border, work 2 rows in elastic rib, then cont. in k3/p3 rib st. When work measures 4.5 cm. cont. with knitting needles no. 3 in knit stitch. decreasing 27 (23-25) sts. evenly in the first row. When work measures 34 (32-33) cm. from border decr. at ends, inside 3 sts., 2 sts. and rep. these decreases every 8 rows another 3 times; when work measures 50 (48-49) cm. from border incr. at ends 1 st. every 8 rows 4 times. When work measures 63 (57-60) cm. from border, to shape the armholes decr. at ends, inside 3 sts., 2 sts. every 2 rows twice, 2 sts. every 4 rows 4 (2-3) times. When work measures 19 (17-18) cm. from beg. of the armholes, to slant the shoulders decr. at ends, inside 4 sts., 1 st. every 2 rows 18 (16-17) times and, at the same time, decr. at outer ends 1 st. every 2 rows 18 (16-17) times. When work measures 8.5 (7.5-8) cm. from beg. of the shoulder slant cross off the 46 (42-44) rem. sts.

Front: with knitting needles no. 21/2 cast on 189 (165-177) sts. and work the border in same way as back. Cont. with knitting needles no. 3, decr. 33 (29-31) sts. evenly in the first row. and establish the sts. as follows: 40 (32-36) sts. in knit stitch., (3 sts. in purl st., 5 sts. for the cable) twice, 2 sts. in purl st., 2 sts. in knit stitch., 36 in diamond st., 2 sts. in knit stitch., 2 sts. in purl st., (5 sts. for the cable, 3 sts. in purl st.) twice, 40 (32-36) sts. in knit stitch. When work measures 34 (32-33) cm. from border decr. at ends, inside 3 sts., 2 sts. and rep. these decreases every 8 rows another 3 times; When work measures 55 (53-54) cm. from border incr. at ends 1 st. When work measures 63 (57-60) cm. from border, to shape the armholes cross off at ends 6 sts., then decr., inside 3 sts., 2 sts. every 2 rows 4 times, 2 sts. every 4 rows 3 (1-2) times. When work measures 15 (13-14) cm. from beg. of the armholes, to shape the neckline cross off the 22 (18-20) centre sts. and end the two parts separately; cross off again centrewise, every 2 rows, 2 sts. twice, 1 st. 8 times. When work measures 12.5 (11.5-12) cm. from beg. of the neckline cross off the 28 (24-26) rem. sts. for each shoulder.

Sleeves: with knitting needles no. 21/2 cast on 105 (93-99) sts. and for the border, work 2 rows in elastic rib, then cont. in k3/p3 rib st. When work measures 3 cm. cont. with knitting needles no. 3 in knit stitch. decreasing 15 sts. evenly in the first row. At ends incr. 1 st. every 4 rows 5 times. When work measures 5.5 cm. from border, to shape the armholes decr. at ends, inside 3 sts., 2 sts. every 4 rows 4 times, 2 sts. every 6 rows 5 times, 2 sts. every 4 rows 5 times, 2 sts. every 2 rows 6 (4-5) times. When work measures 19.5 (15.5-17.5) cm. from beg. of the armholes cross off the 20 (16-18) rem. sts.

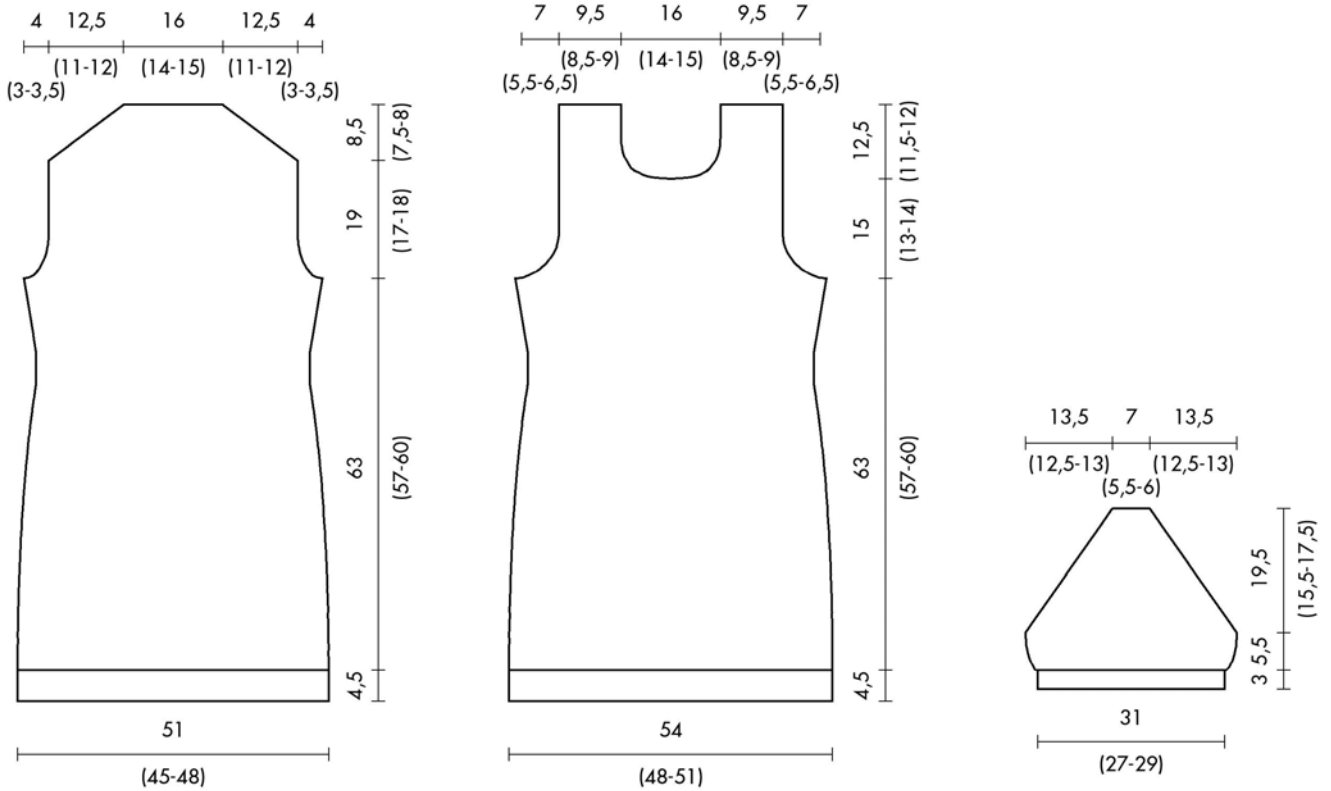
WORKING INSTRUCTIONS FOR SLEEVES

With knitting needles no. 2 cast on 93 (81-87) sts., work 2 rows in elastic rib, then cont. in k3/p3 rib st. At ends decr. 1 st. every 6 cm 4 times. When work measures 30 cm. cross off at ends 9 sts. When work measures 36 cm. work 2 rows in elastic rib, then bind off the sts. with the tapestry needle. Work 2 identical gloves.

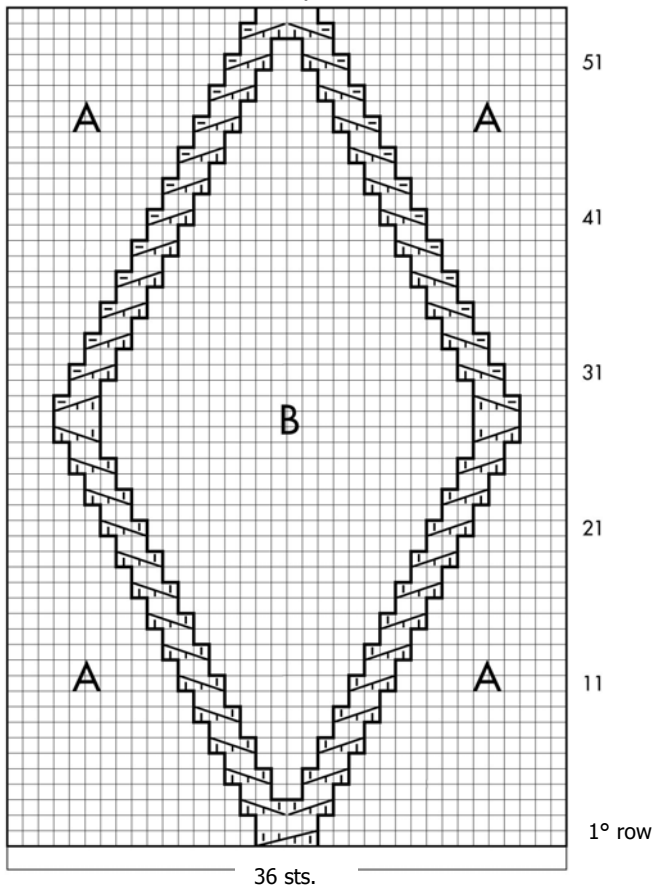
MAKE UP AND FINISH

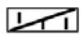
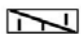


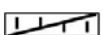
Dress: Sew up a shoulder. With knitting needles no. 21/2 pick up 165 (153-159) around the neckline and work in k3/p3 rib st. for 23 cm.; work 2 rows in elastic rib, then bind off the sts. with the tapestry needle. Sew up the other shoulder and the sides of neck leaving a cuff. Sew up the sides. Sew up and join the sleeves.

Sleeves: sew up the side edges up to the 9 crossed off stitches; leave these stitches free (opening for the thumb) and complete the seam upwards.



Diamond stitch
Row 55: rep. from row 1



- A purl stitch
- B knit stitch
-  cross 3 sts rightwise A
-  cross 3 sts leftwise A
-  cross 3 sts rightwise B
-  cross 3 sts leftwise B
-  cross 4 sts rightwise

Each square corresponds to 1 st. and 1 row